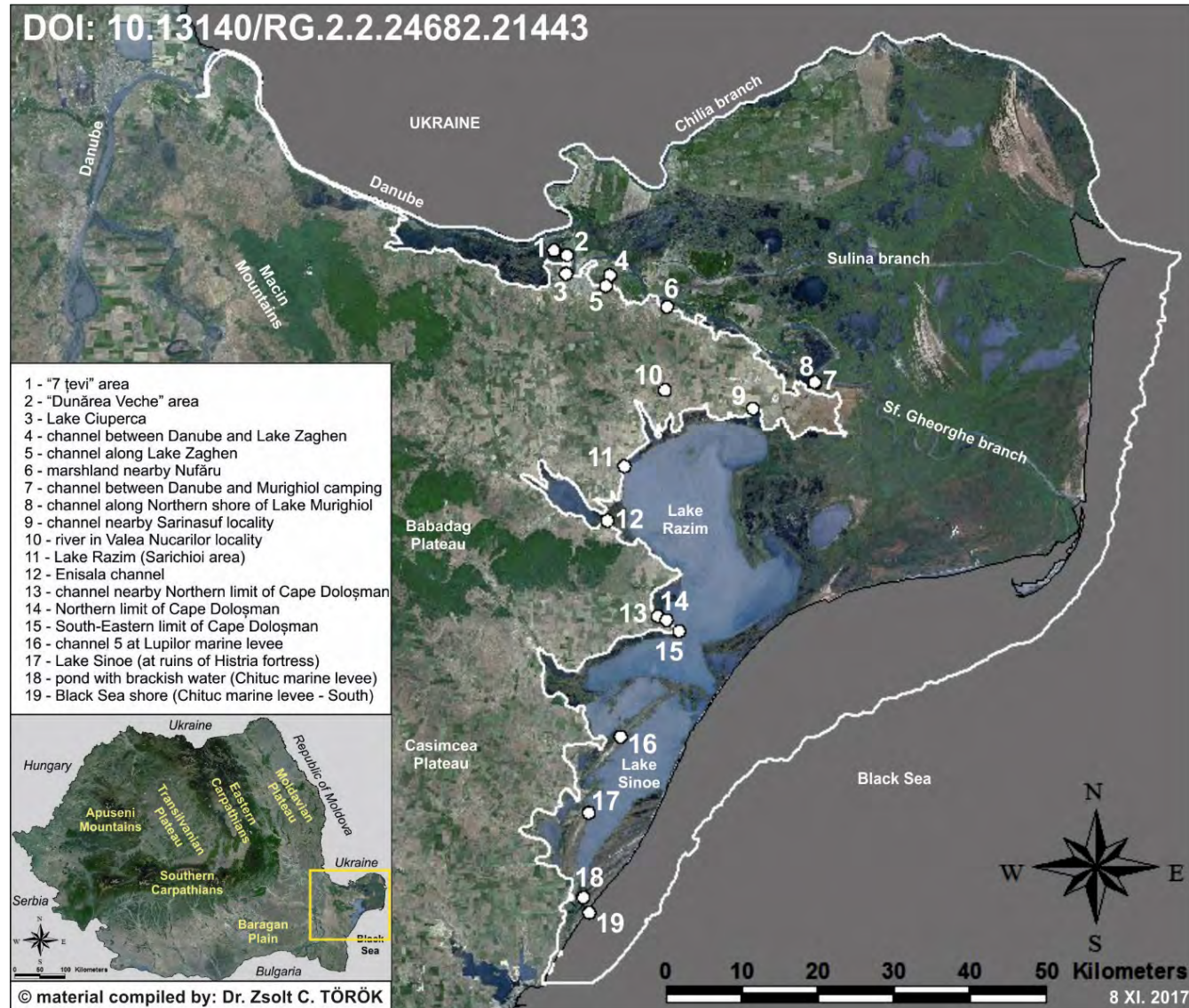


## Sites checked out for macroalgae in Danube Delta Biosphere Reserve, 16 - 17 October 2017

Author: Dr. Zsolt Török

In 16 - 17 October 2017 there were checked out for macroalgae the waterbodies from 19 sites (16 inside the Danube Delta Biosphere Reserve and 3 close or relatively close to the limit - white line in the image - of the mentioned protected area).

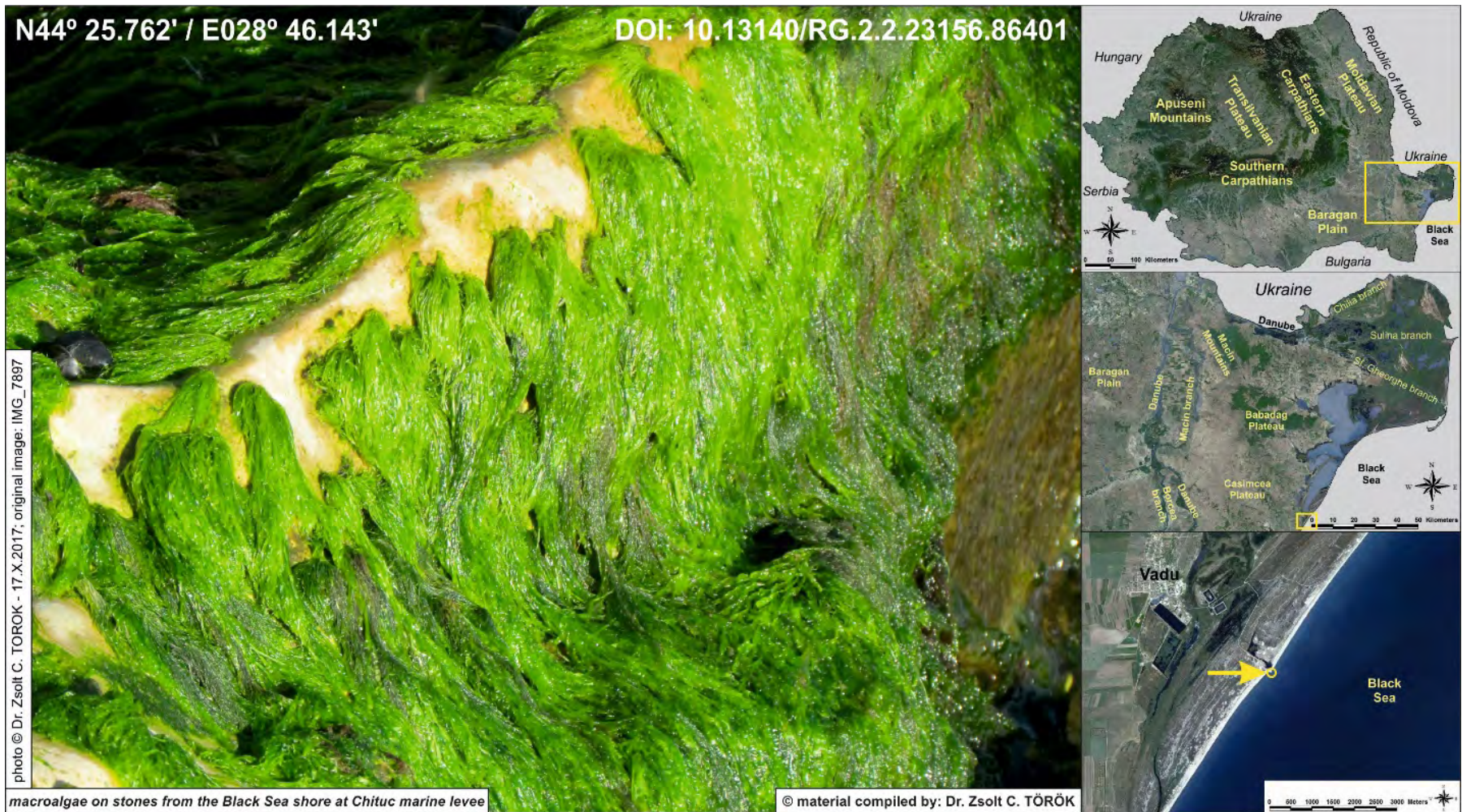




# Collage with the image of and maps with the layer of macroalgae covering stones along the Black Sea shore, in the Southern part of Chituc marine levee

Author: Dr. Zsolt Török

The dominant macroalgae is *Ulva* (Enteromorpha) *intestinalis* (identification of the taxa was performed by Dr. Oana Alina Marin - from the Grigore Antipa National Institute for Marine Research and Development).





## Close-up of filamentous algae

Author: Dr. Zsolt Török

Probably *Cladophora* sp. is the filamentous algae which forms thick layers along the shore of the water-course from Valea Nucarilor locality (Tulcea county, Romania).

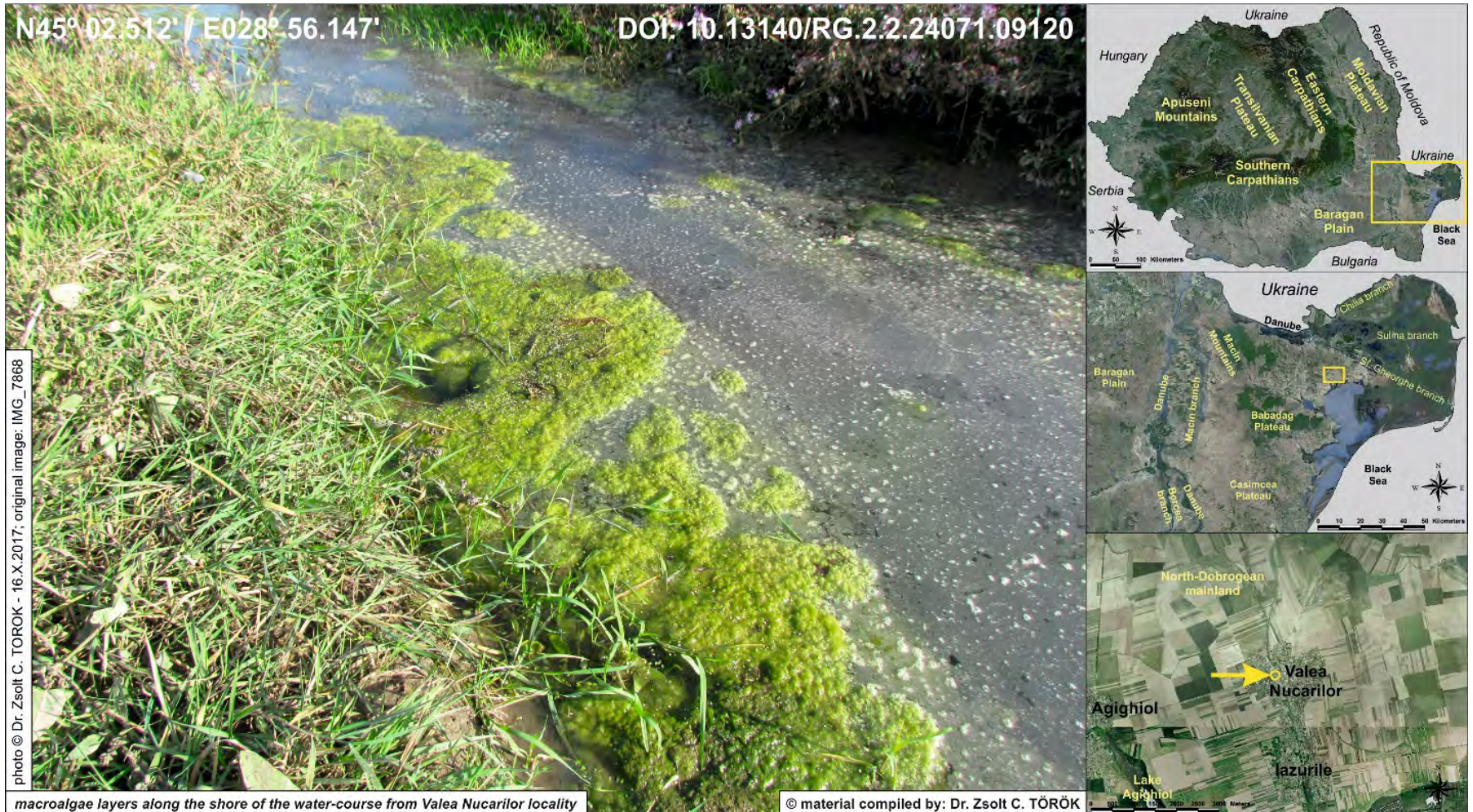




## Layers with macroalgae in the water-course from Valea Nucarilor

Author: Dr. Zsolt Török

I assume that the dominant species of th there were thick layers of macroalgae recorded along the shore of the small water-course from Valea Nucarilor locality (Tulcea county, Romania) belongs to genus *Cladophora*.

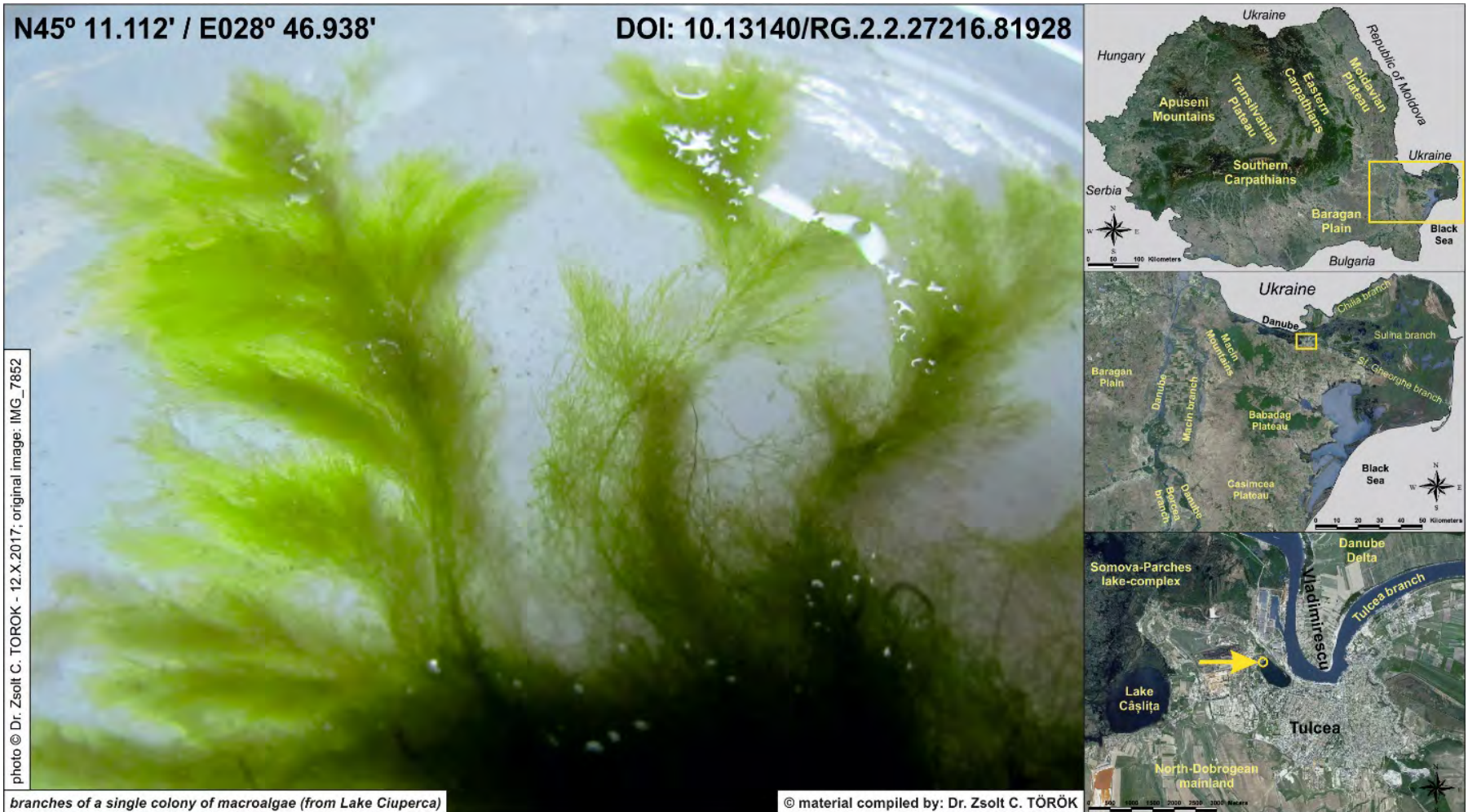




# Image on the branches of a single colony of macroalgae

Author: Dr. Zsolt Török

The image shows details on the branches of a single colony of macroalgae, harvested in 10.10. 2017, at Lake Ciuperca (Tulcea city, South-Eastern Romania).





## Stripe with maximum biomass of macroalgae

Author: Dr. Zsolt Török

Most of the macroalgae colonies are fixed to the iron parts of a boat mooring pontoon, along a stripe (of about 5 cm width) in the uppermost layer of the water (lake Ciuperca, Tulcea city, Romania).





# Collage with the image of and maps with macroalgae colonies in channel at Northern limit of Cape Dolosman

Author: Dr. Zsolt Török

Colonies of macroalgae along a section without reed of the shore of the channel located at the northern limit of Cape Dolosman (Danube Delta Biosphere Reserve, Romania).

