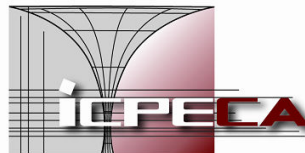


Nr. Registrul Comerțului
J40/3800/2001
Cod Fiscal RO 13827850
Capital Social: 381.108 Lei
Trezorerie M.B.:
RO24TREZ7005069XX002740

Cont : ROL
RO52RNCB0076029424690001
BCR SMB
Splaiul Unirii nr. 313, sector 3
București, 030138, România

Email: office@icpe-ca.ro
www.icpe-ca.ro
Tel: +4021.346.7231
+4021.346.8297
Fax: +4021.346.8299



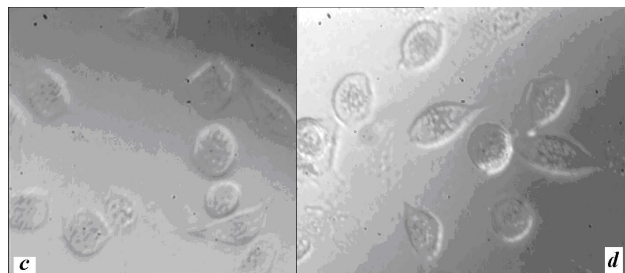
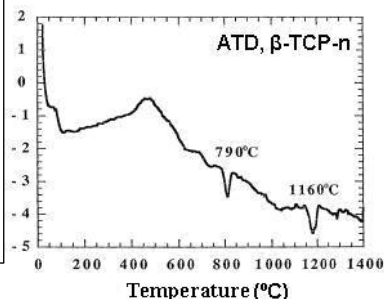
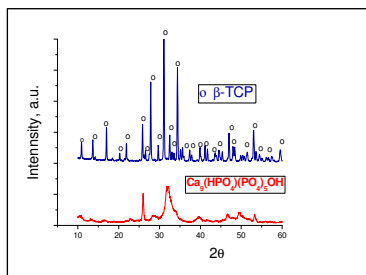
DATA SHEET

Granular Product, PG β -TCP

Products protected by:
-Patent nr. A00847, from 29.07.2011
-Patent application nr. A/00374 from 19.04.2011

PRODUCT CHARACTERISTICS PG- β -TCP

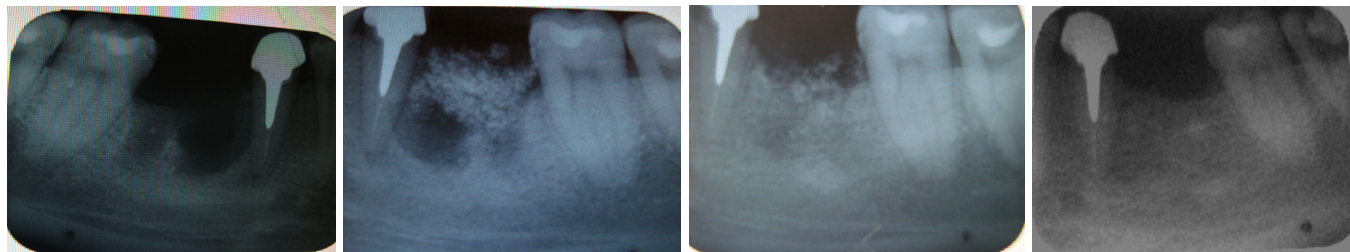
- **Complex Characterization : DRX/TG/ATD/DSC/FT-IR/SEM/TEM**
- **Composition: major phase β -Ca₃(PO₄)₂, (β - TCP)**
- **Dimensions: 500-1000 μ m**
- **Product with nano- and microporosity**
- **Biocompatible (non-cytotoxic)**
- **Osteoconductive: allow the development of biological bone and favourable conditions for healing**
- **Bioresorbable: is gradually replaced by newly formed bone/rapid healing**
- **PG- β -TCP is 100% synthetic product, no risk of disease transmission**
- **Does not require re-operation to remove the product**
- **The product is radio-opaque: allows visualization during and after surgery**
- **The product does not contain substances derived from animal or human origin**
- **The product is sterilized, does not require any special storage/preservation**



DRX and ATD for nano- β - TCP compound

in vitro -Cytotoxicity Testing / SN ISO

CLINICAL TESTING: Addition of synthetic bone (PG β -TCP, 500-1000 μ m)



Radiological images: A) after extraction; B) after 1 day after addition of synthetic bone; C) after 6 months of addition of synthetic bone; D) after 1 year from the addition of synthetic bone

USE

PG- β -TCP is recommended for oral surgery and implantology, filling applications and reconstruction of bone defects: sinus lift, alveolar defects filling after extraction and after corrective osteotomies

Product presentation:

- 500-1000 μ m granules, 2ml (0,5/ 1g) vials sterilized (average dose 25kGy), according SR EN ISO 11137