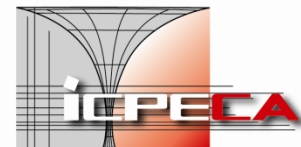




Nr. Registrul Comerțului
J40/3800/2001
Cod Fiscal RO 13827850
Capital Social: 381.108 Lei
Trezorerie M.B.:
RO24TREZ7005069XX002740

Cont : ROL
RO52RNCB0076029424690001
BCR SMB
Splaiul Unirii no. 313, sector 3
Bucharest, 030138, Romania

Email: office@icpe-ca.ro
www.icpe-ca.ro
Phone: +4021.346.7231
+4021.346.8297
Fax: +4021.346.8299



Analysis services of kinematic and dynamic phenomena

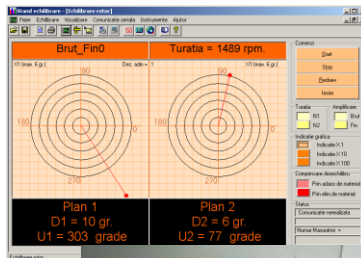
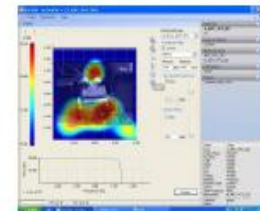
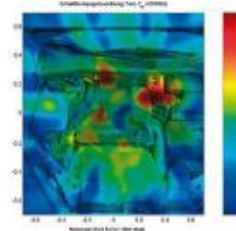
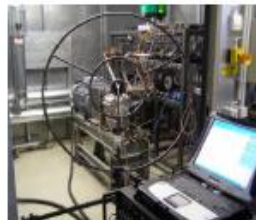
1. Static and dynamic analysis services

Application area:

- acoustic analysis of big, free standing objects during operation in the free field;
- outdoor mapping of airplanes and military equipment;
- localization of sound in various frequencies bands, for different wind speeds;
- outdoor mapping of wind turbine;
- train curve squealing noise.

They are intended to achieve noise maps (2D) for various equipment, both in laboratory applications (anechoic rooms, normal rooms), industrial buildings, as well as outdoor applications.

The method is based on the Acoustic Camera (camcorder 32 measurement microphones).



2. Dynamic balancing services for rotating moving parts

Systems of measurement of vibrations and dynamic imbalance in 1 or 2 planes with automatic determination of the balancing weights and display the value of the position vector and imbalance;

Experimental research of vibration in the fields of assessing dynamic behavior and diagnosis machines and equipment

Analyzes vibroacoustic:

- vibration monitoring analysis (acceleration, speed, displacement) on four channels simultaneously;
- analysis of Fourier spectrum signal in frequency;
- diagnosis and predictive maintenance of machinery and equipment.

Systems for *in situ* measurement of the dynamic imbalance in one or two planes for various parts (rotor-rotor type machines electric, clutch discs, cardan shafts, ventilation systems, crankshaft etc.).



3. Optical analysis services of kinematic and dynamic phenomena

TRITOP is an optical coordinate measuring machine.

This mobile technology is designed to define the exact 3D position of markers and visible features, offering time effective on-site measurement for:

- quality control of large objects, verification of jigs and fixtures;
- verification of shape and position tolerances;
- verification of specifications from drawings, files or tables;
- static deformation analysis.

The TRITOP CMM module measures the coordinates for any feature of interest while allowing for CAD comparison.

