



Nr. Registrul Comerțului
J40/3800/2001
Cod Fiscal RO 13827850
Capital Social: 381.108 Lei
Trezorerie M.B.:
RO24TREZ7005069XX002740

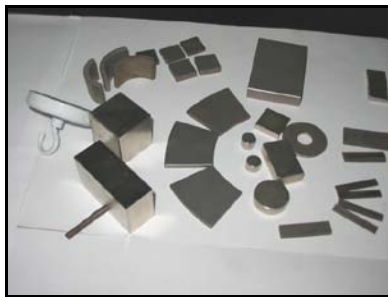
Cont : ROL
RO52RNCB0076029424690001
BCR SMB
Splaiul Unirii no. 313, sector 3
Bucharest, 030138, Romania

Email: office@icpe-ca.ro
www.icpe-ca.ro
Phone: +4021.346.7231
+4021.346.8297
Fax: +4021.346.8299



HIGH MAGNETIC STABILITY NdFeB SINTERED MAGNETS

Description: isotropic permanent magnets obtained by incorporating NdFeB alloy microcrystalline magnetic powders into polymeric matrices.



Characteristics:

- residual flux density, B_r : min. 1 T;
- intrinsic coercivity H_{cJ} : min. 1750 kA/m;
- maximum energy density $(BH)_{max}$: min. 175 kJ/m³;
- maximum operating temperature, T_{max} : 150 - 200°C;
- temperature coefficients for B_r , in the range 20°C to 100°C, $\alpha(B_r)$: -0.1%/°C;
- temperature coefficients for H_{cJ} , in the range 20°C to 100°C, $\beta(H_{cJ})$: -0.55%/°C;
- density: min. 7.5 g/cm³.

Size and shape:

- $\Phi = 5 \dots 25$ mm; $h = 1 \dots 10$ mm;
- $L = \max. 40$ mm; $l = \max. 25$ mm; $h = 2 \dots 10$ mm.

Applications:

- magnetic circuits for motors;
- transducers;
- magnetic separators;
- magnetic couplings for pumps;
- devices for magnetic treatments of the fluids etc.